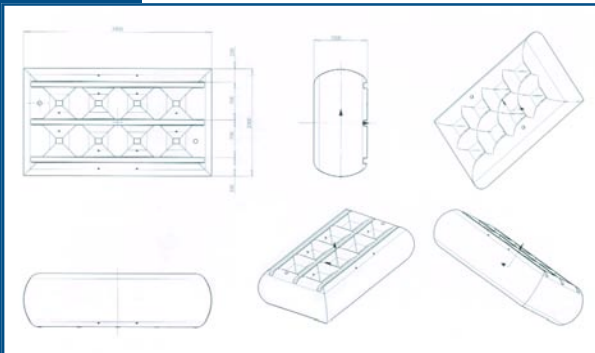


DESIGN AND PRODUCTION

Module configuration has been found by composing and intersecting cylindrical and elliptical surfaces that enable to have solidity in all directions, a more even temperature distribution during construction process and a more uniform thickness on all surfaces, easier to be measured.

Floater Element is made by a rotomoulding process.



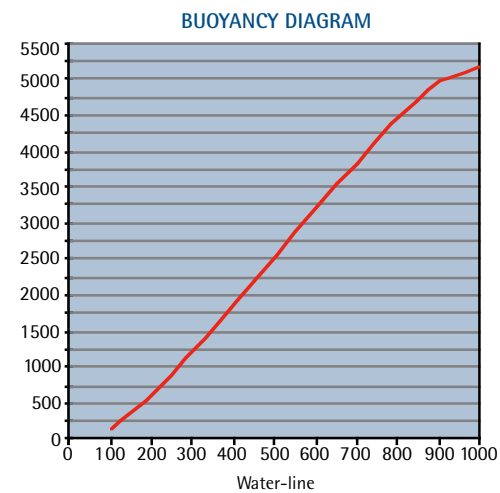
- Max overall dimensions: 3.500x2.000x1.000 mm
- Material: Super linear Polyethylene, medium density (935 kg/m³)
- Floater Element buoyancy: 5.325 kg
- Floater Element buoyancy with immersion of 450mm: 2.400 kg
- Medium PE thickness: 15 mm
- PE Floater Element weight: 365 kg
- Fast on connections for air inlet line: directly moulded with the element with dimensions as per instructions that will be given
- The connection frame are tailor made

BUOYANCY CONTROL

Each unit can be equipped with a hydrostatic control system that allows the Floater Element to become submersible.

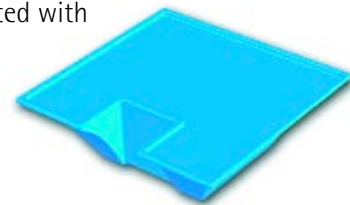
When required the Floater Element can be filled with water from specific openings located on the bottom of the structure.

An air supply/relief system regulates the water storage or discharge to allow the full buoyancy control of the Floater Element in any circumstances. This is an efficient solution designed to respond to emergencies such as sudden bad weather, storms, or rough sea, which could be harmful to the Floater Element or the floating structure created by a number of Floater Elements.



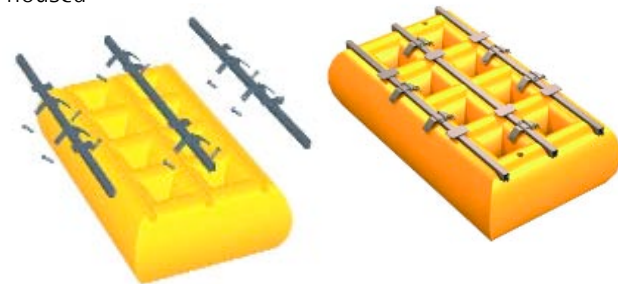
CONES FOR CLOSURE

Polyethylene linear medium density-rotomoulded completed with brass pin, treaded galvanized beams and nuts self locked and polyethylene flange to be installed on each PE Floater Element to allow to walk on the upper part.



CONNECTION SYSTEM

Connection to PE structure is made by three section bars housed in longitudinal grooves shaped inside the PE structure itself. Bars are fixed to the PE structure by means of n. 6 especially shaped anchor plates and check pins inserted in prepared housings.



The environment as nature intends

Floater Element®



ISEA SpA

Via Salvo D'Acquisto, 4

26862 - Guardamiglio (LO) - Italy

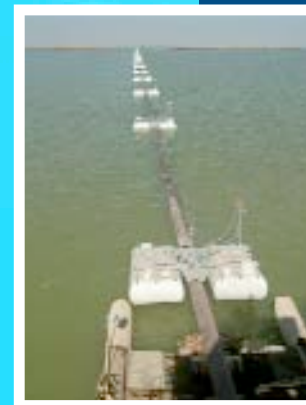
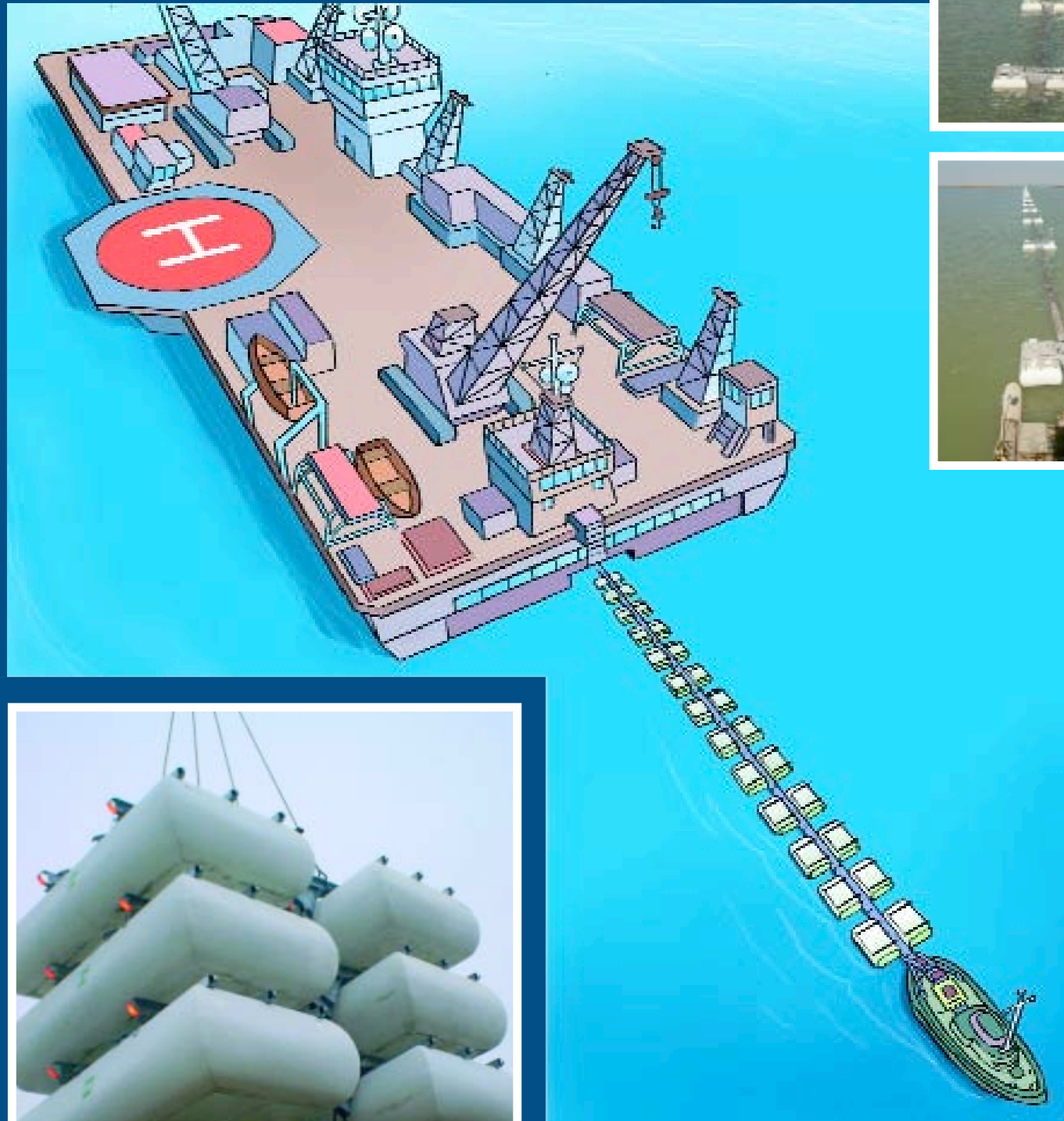
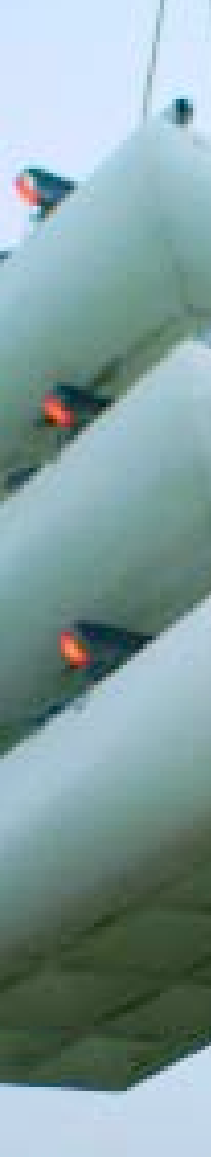
tel. +39 0377 51881 • fax +39 0377 518852

isea@iseagroup.it • www.iseagroup.com

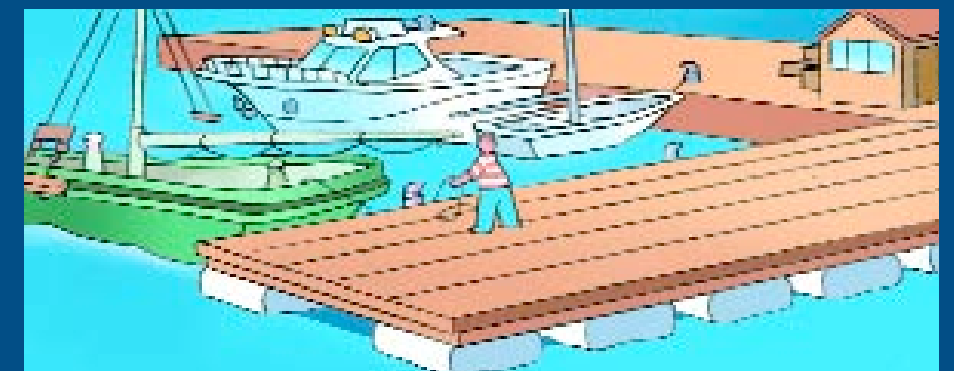
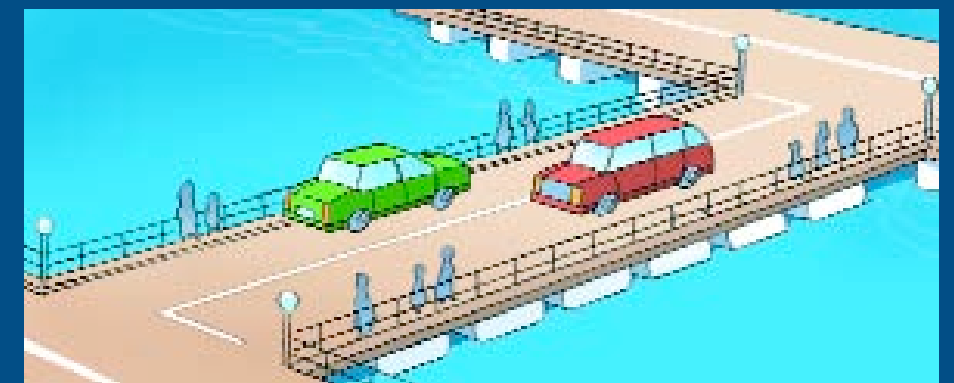
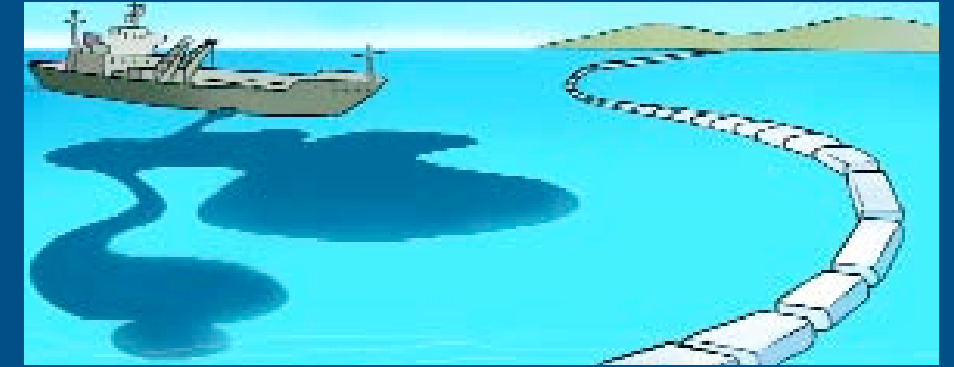




Polyethylene Floater Element[®]



Further potential applications



Floater Element[®]